

Figure S20

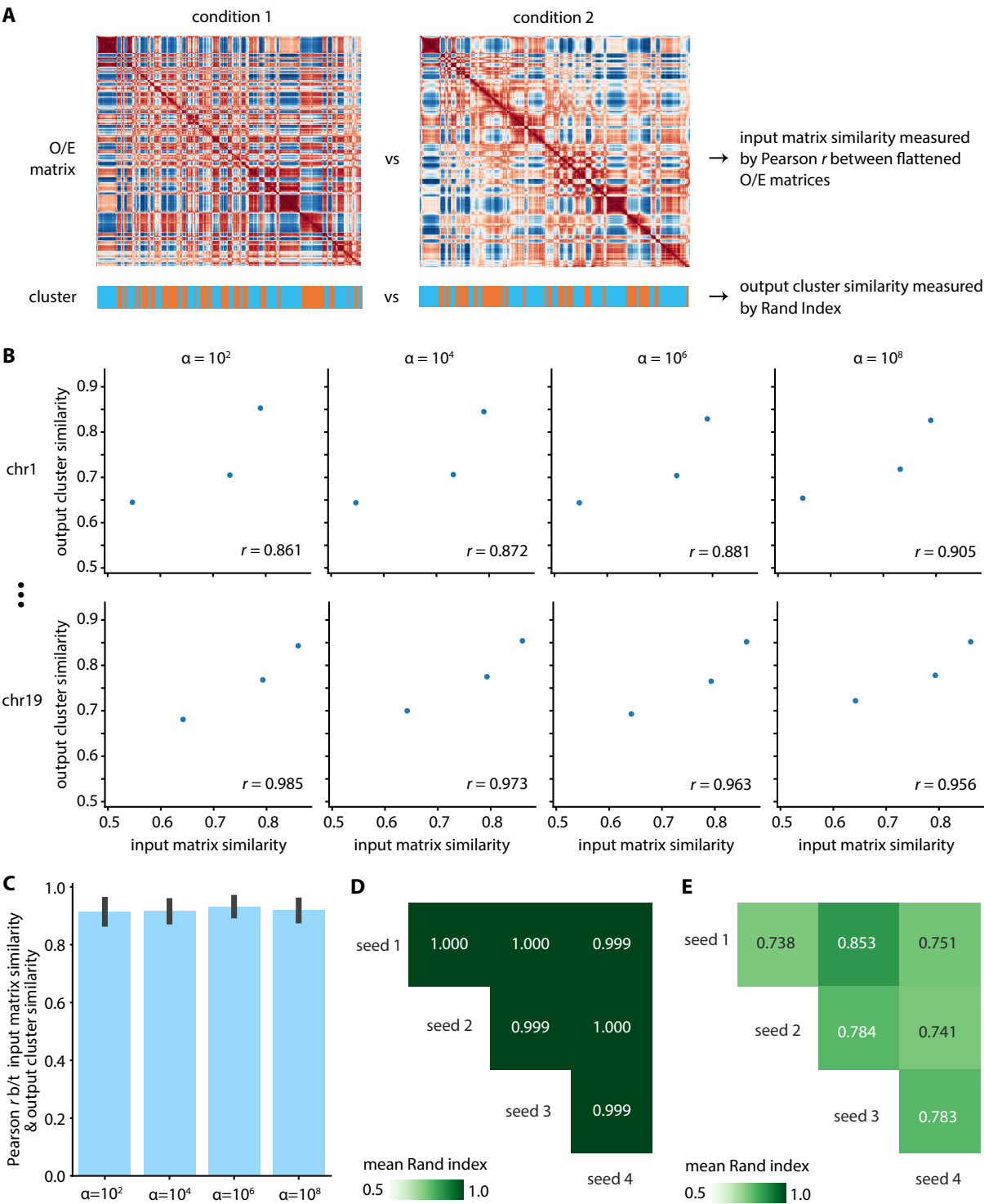


Figure S20. Hyperparameter α selection for TGIF-DC. **(A)** The similarity between the O/E count matrices is measured by correlation of the flattened matrices the output cluster similarity measured by Rand index. **(B)** Plotting input matrix similarity vs output cluster similarity for each α and each chromosome. Each dot represents one pairwise comparison. **(C)** Correlation between the input matrix similarity and the output cluster similarity for different values of α . **(D)** Similarity of cluster assignments from different random initialization seeds (with $\alpha = 10^4$), measured by Rand index.